

BUILT FOR FARMERS

Proven performance in every acre.



Stratton Seed Company

2025-26 Corn & Soybean
Product Guide



Go Corn

GENETICS OPTIMIZED



Go Soy

GENETICS OPTIMIZED



DONMARIO®

SEEDS



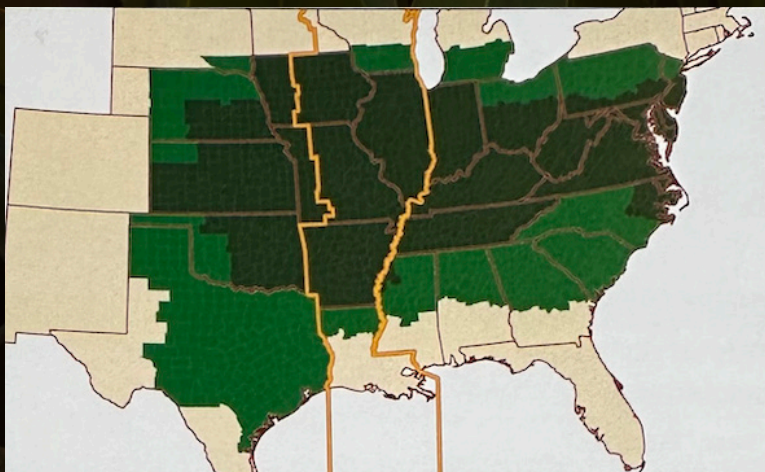
PRECISION GENETICS **MAXIMUM PROFITS**

Eliminate the guessing games with Go Corn. Our optimized genetics are designed to endure environmental stressors while leveraging available nutrients. Go Corn varieties not only fight off pests and weeds with PowerCore® Enlist® technology, but are also resistant to FOP chemistries introduced by herbicide drift from rice. Less surprises, more profits.



Industry-leading yield potential when planted at medium to medium low populations. Will respond to higher management.

- Tremendous top-end yield potential
- Outstanding ear flex allows moderate planting populations
- Strong southern movement
- Solid disease package including strong NCLB and Goss's Wilt tolerance
- Key product for lineups east-to-west
- Great dual-purpose potential



ARGONOMIC CHARACTERISTICS

FLOWERING (GDU)	1330
BLACK LAYERS (GDU)	2597
PLANT HEIGHT	MEDIUM TALL
EAR PLACEMENT	MEDIUM
EAR TYPE	FLEX
COB COLOR	RED
DRYDOWN	MEDIUM
HUSK COVER	COMPLETE
KERNEL ROWS	16-20

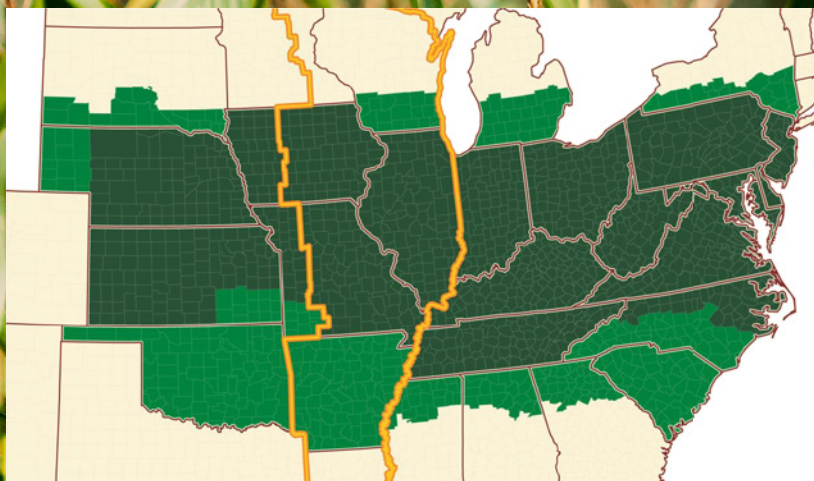
VERSIONS

CONVENTIONAL	YES
ORGANIC	YES
GLYPHOSATE	N/A
ABOVE GROUND	PowerCore® Enlist® Refuge Advanced®
ABOVE/BELOW GROUND	N/A



Position east-to-west for top-end yield potential

- Excellent top-end yield potential
- Outstanding multiple year data
- Strong stalks late into the fall
- Good test weight grain
- Above-average NCLB and Tar Spot tolerance
- PowerCore® Enlist® Refuge Advanced® option



ARGONOMIC CHARACTERISTICS

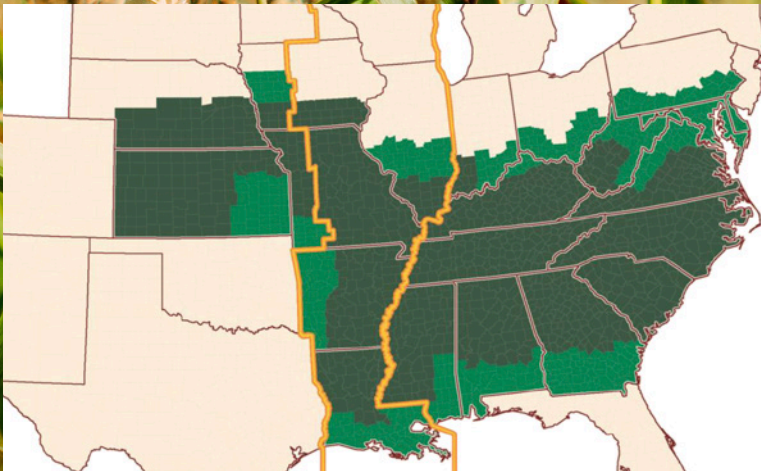
FLOWERING (GDU)	1340
BLACK LAYERS (GDU)	2610
PLANT HEIGHT	MEDIUM TALL
EAR PLACEMENT	MEDIUM
EAR TYPE	SEMI FLEX
COB COLOR	PINK
DRYDOWN	MEDIUM
HUSK COVER	INCOMPLETE
KERNEL ROWS	16-18

VERSIONS

CONVENTIONAL	YES
ORGANIC	YES
GLYPHOSATE	N/A
ABOVE GROUND	PowerCore® Enlist® RefugeAdvanced®
ABOVE/BELOW GROUND	N/A

Position east-to-west on the better soils through the southern portion of the Corn Belt and mid-south.

- Full season product with east-to-west movement
- Above-average stalk strength and greensnap tolerance
- Outstanding ear flex allows planting at lower populations
- Solid disease package
- Well suited to highly managed, irrigated environments
- Strong dual-purpose option



ARGONOMIC CHARACTERISTICS

FLOWERING (GDU)	1350
BLACK LAYERS (GDU)	2730
PLANT HEIGHT	MEDIUM TALL
EAR PLACEMENT	MEDIUM
EAR TYPE	FLEX
COB COLOR	RED
DRYDOWN	MEDIUM FAST
HUSK COVER	INCOMPLETE
KERNEL ROWS	16-20

VERSIONS

CONVENTIONAL	NO
ORGANIC	NO
GLYPHOSATE	N/A
ABOVE GROUND	PowerCore® Enlist® Refuge Advanced®
ABOVE/BELOW GROUND	N/A



GoCorn GC17PC26

GENETICS OPTIMIZED

Position as a dual-purpose full season product for the southern markets.

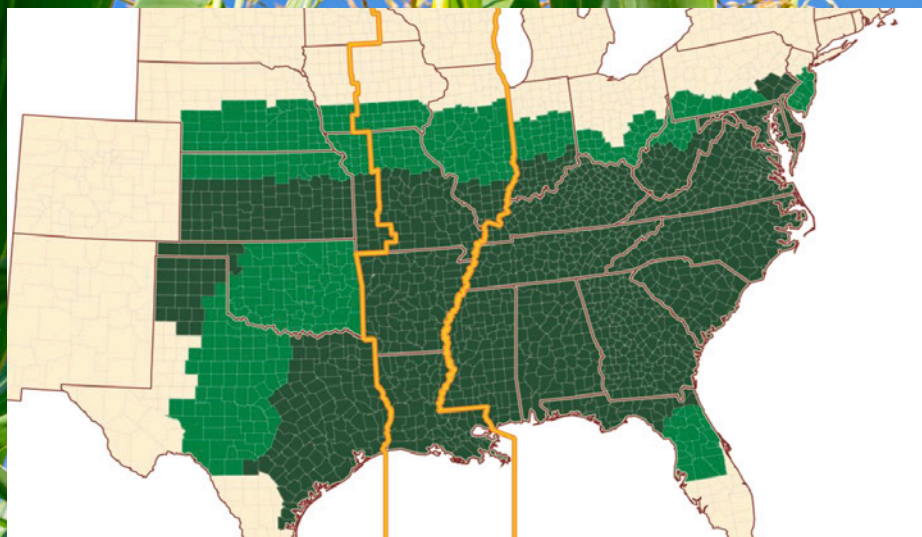
- Full season product for the mid and deep south
- Flex ear style allows moderate planting populations
- Ability to perform at top-end yield levels
- Tall statured product that works well for grain and silage
- Good disease package for area of adaption
- Strong stalk strength

ARGONOMIC CHARACTERISTICS

FLOWERING (GDU)	1365
BLACK LAYERS (GDU)	2750
PLANT HEIGHT	TALL
EAR PLACEMENT	MEDIUM HIGH
EAR TYPE	FLEX
COB COLOR	PINK
DRYDOWN	MEDIUM
HUSK COVER	EXTENDED
KERNEL ROWS	16-18

VERSIONS

CONVENTIONAL	YES
ORGANIC	YES
GLYPHOSATE	N/A
ABOVE GROUND	PowerCore® Enlist® Refuge Advanced®
ABOVE/BELOW GROUND	N/A





Stratton Seed Company

Introducing Flexible Seed Financing:

Buy Now & Pay Later

Stratton Seed has joined forces with Rabo AgriFinance to offer qualified growers a 'Buy Now & Pay Later' financing option. This collaboration provides corn and soybean farmers with access to high-quality seeds and crucial inputs without immediate financial strain. As costs continue to rise, financial flexibility is essential to keep your operation running at its fullest potential.

Fill out our online application or contact your local Stratton Seed Representative, listed on page 16, today for more information!

How do Growers Apply:
Visit **Grower.RaboAg.com**
or contact your local
Stratton Seed Representative



***Scan now for an
application.***

*Subject to Rabo AgriFinance credit approval, terms and conditions.

**Any balance remaining after 180 period is subject to Prime +3% interest rate. Prime Rate means for any day the highest rate published from time to time in the "Money Rates" section of The Wall Street Journal as the Prime Rate for that day (or, if The Wall Street Journal is not available, any other authoritative source of that rate selected by Lender).

Apply Enlist® herbicides with confidence.

Review before spraying to ensure successful applications. For detailed instructions, visit [Enlist.com/Apply](https://www.enlist.com/Apply).

Always follow all label requirements.

THE NEXT GENERATION OF TECHNOLOGY



ON-TARGET APPLICATIONS: | 90% less drift than traditional 2,4-D | 96% less volatile than 2,4-D ester



Following burndown, Enlist Duo® and Enlist One® herbicides with Colex-D® technology are the only herbicides containing 2,4-D that are labeled for preemergence and postemergence use with Enlist E3® soybeans.

| 2,4-D choline | Glyphosate | Glufosinate

- Convenient proprietary blend of 2,4-D choline and glyphosate
- The two modes of action work together to deliver control of yield-robbing weeds and help prevent resistance
- Straight goods 2,4-D choline with additional tank-mix flexibility
- Provides additional tank-mix flexibility with glyphosate, glufosinate and other qualified tank-mix products, allowing for a customized weed control program to fit each farm



BEFORE SPRAYING



1. Application Window

No later than R2 or full flowering stage.



2. Tank-Mix Partners

Check [EnlistTankMix.com](https://www.enlist.com/TankMix) for qualified tank-mix products.



3. Nozzles

Use only nozzles & pressure combinations listed on the product label.



4. Wind Speed, Weather

Target application at wind speeds greater than 3 mph, but less than 10 mph. Do not apply at wind speeds greater than 15 mph. Don't spray during a temperature inversion.



5. Susceptible Crops

Only spray when the wind is blowing away from susceptible crops listed on the product label, including tomatoes, fruiting vegetables, cucurbits, grapes, tobacco and cotton without the Enlist™ trait. Do not spray if the wind is blowing toward a susceptible crop.



6. Sensitive Area

Maintain a 30-foot downwind buffer (in the direction in which the wind is blowing) from any sensitive area (e.g., wooded areas, pastures, roadside ditches, lawns, tree plantations).



7. Sprayer Contamination

Make sure sprayer is clean from prior applications before using Enlist™ herbicides to avoid tank contamination.

APPLICATION



1. Spray Pressure

Verify spray pressure based on the product label and current conditions. Ground speed, product volume and nozzle selection all factor into the appropriate spray pressure.



2. Spray Rate

Enlist Duo® herbicide: 4.75 pt./A

Enlist One® herbicide: 2 pt./A



3. Spray Volume

Apply a spray volume of water ranging from 10 to 15 gal./A for best results.



4. Boom Height

Consult the nozzle manufacturer for optimum boom height (usually 24 inches or less above crop canopy).



5. Cleanout

After applying on Enlist™ herbicide, make sure to clean-water flush sprayer with 10% of tank volume and triple-rinse when application is complete.



ENLIST™ E3 SOYBEAN HERBICIDE TOLERANCES:

New 2,4-D Choline
Glyphosate
Glufosinate



GoSoy 2025/26 Enlist E3[®] Soybean Product Line

	GoSoy 451E26E	GoSoy 461E24	GoSoy 472E26NSE	GoSoy 481E26S	GoSoy 492E26NSE	GoSoy 493E22N	GoSoy 541E22
MATURITY	4.5	4.6	4.7	4.8	4.8	4.9	5.4
PLANT TYPE	M	M	MT	M	MT	MT	MT
SOIL TYPE	LIGHT-MIXED	MIXED-HEAVY	ALL	ALL	LIGHT-MIXED	LIGHT-MIXED	MIXED-HEAVY
COMMENTS	Strong performance across Midsouth & LA; Excluder with SCN, SC and Rps1 k	Tough Defensive Package for RKN ground	Unique combination of RKN and STS with the excluder gene	Competitive Late 4 with good yield performance across all environments	RKN, STS, Excluder; Awesome stress tolerance.	Late Group IV with Root Knot Resistance. High yielding line.	Mid Group V with Height to handle tough clay soils. Excellent Double Crop!
IDC	TBD	TBD	2.5	TBD	2.5	TBD	TBD
SDS	3	2	2	2	2.5	2	1.5
FE	2	2	1.5	1.5	1.5	2.5	2
RKN	TBD	S	R	TBD	R	R	S
SC	R	R	R	R	R	R	R
METRIBUZIN RATING	T	T	TBD	TBD	TBD	T	T
STS	S	V	T	T	T	S	S
POD COLOR	B	B	T	B	B	B	B

IDC- Iron Deficiency Chlorosis • SDS-Sudden Death Syndrome • FE-Frog Eye • RKN-Root Knot Nematode • SC-Stem Canker • STS-Sulfonylurea-tolerant
Ratings are based on a 1-5 scale – 1 = Best 5 = Worst



THE BEST OF BOTH WORLDS

Most soybean varieties are designed to only target high yield or disease protection – Go Soy does both. Field-tested for your success, Go Soy is a defensive bean that safeguards your crops from pests and fungal diseases while also maximizing output. Our relentless testing and research have led to top-tier varieties that generate maximum results.

**Find your area rep. listed on page
16 to place an order today!**

IDC- Iron Deficiency Chlorosis • SDS-Sudden Death Syndrome • FE-Frog Eye • RKN-Root Knot Nematode • SC-Stem Canker • STS-Sulfonylurea-tolerant
Ratings are based on a 1-5 scale – 1 = Best 5 = Worst



2025/26 GT Glyphosate Tolerant Soybean Product Line

GoSoy 5214 GTS

MATURITY	5.2
PLANT TYPE	MT
SOIL TYPE	MIXED-HEAVY
COMMENTS	Tough Defensive Package for RKN ground
IDC	NA
SDS	2.5
FE	2.5
RKN	R
SC	MR
METRIBUZIN RATING	G
STS	S
POD COLOR	T

Serious About Soybeans. Focused on Performance.

DONMARIO is built for farmers who demand more from their soybeans. More yield, more genetic progress, and more independence. As one of the only independent soybean brands in the U.S. with its own breeding program, DONMARIO brings exclusive genetics and trait choice to growers looking for an edge in soybean performance.

Through strong partnerships with independent seed companies, DONMARIO delivers high-performing soybean varieties that help growers stay competitive and profitable. Our focus has always been the same: breed better soybeans.

Backed by over 40 years of soybean innovation, a deep genetic pipeline, rigorous internal research, and independent third-party evaluations across the U.S., DONMARIO soybeans consistently prove their strength where it matters most, in the field. Our performance isn't just promised, it's proven. See the difference that better breeding makes with DONMARIO.

The DONMARIO Difference

At DONMARIO, we're serious about soybeans and even more serious about helping farmers succeed. For over 40 years, our focus has been on unlocking raw genetic potential to drive yield. From breeding to bag, every decision we make is built to support your performance in the field.

1. Elite genetics developed for local conditions.
2. Premium seed quality that drives strong starts.
3. Trait and variety options that match local needs.
4. Agronomic insights and real data to guide decisions.



DONMARIO®

S E E D S

Tested by Numbers. Trusted by Farmers.

DONMARIO is a trusted brand in six of the world's top soybean-producing countries, built on decades of proven performance and grower confidence. That same genetic engine is gaining ground in the U.S., giving American farmers access to some of the most validated soybean genetics in global agriculture. At DONMARIO, the numbers back every bag.

40+ YEARS

Advancing soybean genetics since 1982

6 COUNTRIES

DONMARIO® is a trusted global brand in six top soybean producing countries

4

U.S. breeding stations

250,000

U.S. research plots

168+

U.S. testing locations

45,000

New U.S. varieties tested annually

45% Global Share

GDM genetics power nearly half of the world's soybean production

DONMARIO® 2025/26 Soybean Product Lines



	DM45E33S	DM46F54S	DM47F44S	DM48F53	DM49F62S	DM46C34S	DM49C21S
MATURITY	4.5	4.6	4.7	4.8	4.9	4.6	4.9
PLANT TYPE	MT	M	T	M	T	M	MT
SOIL TYPE	ALL	ALL	Sandy, Loam, Clay, Clay Loam	ALL	Loam	ALL	ALL
COMMENTS	Well adapted for midsouth; Solid performance against other mid-4 checks; high yields on heavier grounds EXCLUDER	Widely adapted to Midsouth region; Light tawny/brown plant with SCN, Rp-s1c and STS stacked; Should perform well in heavy clay soils	New mid-4 XtendFlex® variety with good performance across sandy loam, clay & clay loam soils; Strong yield potential in moderate to high yield environments EXCLUDER	Versatile variety with excellent yield potential & reliable agronomics; Built for moderate to high yield environments; Stem canker resistance, very good frogeye & SDS score	Performs best when planted early in high-yield environments on loam soils; Strong competitor against comparable Xtend® and XtendFlex® checks EXCLUDER	INCLUDER	Stable across early, medium and late planting dates EXCLUDER
SDS	2	1.5	2	1.5	2	TBD	2
FE	2	2	2	2	2	TBD	1.5
RKN	S	S	S	S	S	S	S
SC	R	R	R	R	R	R	R
METRIBUZIN RATING	MT	TBD	TBD	MS	T	TBD	MS
STS	T	T	T	S	T	T	T
POD COLOR	T	B	T	T	B	T	T

IDC- Iron Deficiency Chlorosis • SDS-Sudden Death Syndrome • FE-Frog Eye • RKN-Root Knot Nematode • SC-Stem Canker • STS-Sulfonylurea-tolerant

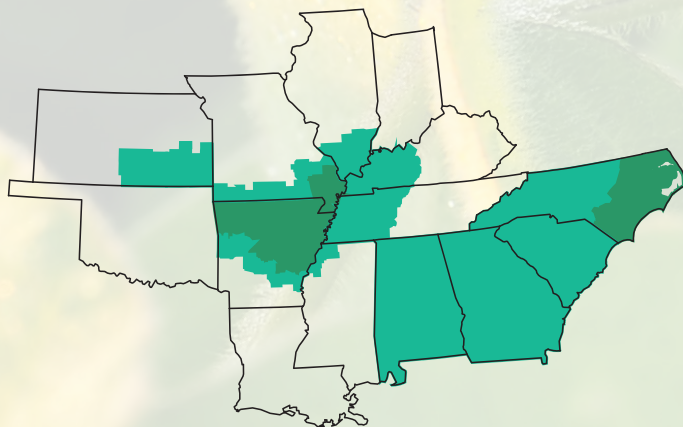
Ratings are based on a 1-5 scale – 1 = Best 5 = Worst

DM46F54S

- ✓ New XtendFlex release for 2024
- ✓ Strong performance versus several national brand checks in 2023 yield data
- ✓ Widely adapted to Midsouth, East Coast and West regions
- ✓ Light tawny / brown plant with **SCN, Rps1c and STS stacked**
- ✓ Should perform very well in **heavy clay soils**

YIELD ENVIRONMENT			SOIL TYPE	
HIGHLY PRODUCTIVE	MODERATE	LOW	SANDY	CLAY
●	●	●	●	●

AREA OF ADAPTABILITY

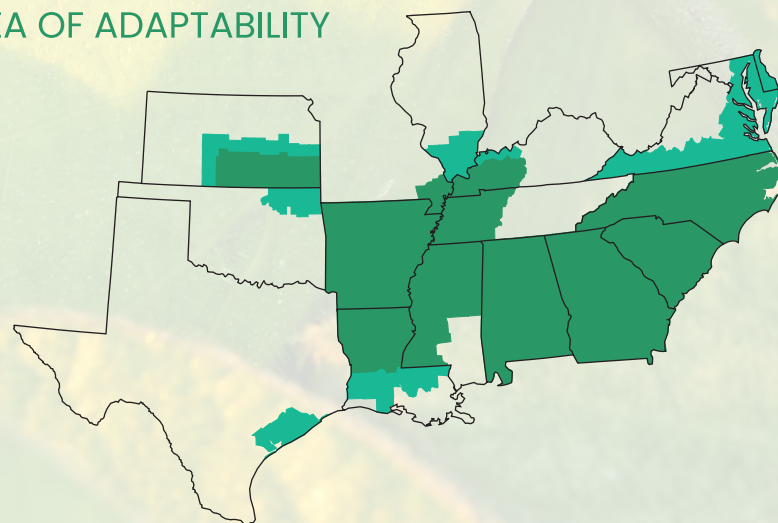


DM47F44S

- ✓ New mid-4 XtendFlex® variety with good performance across sandy loam, clay and clay loam soils
- ✓ Strong yield potential in moderate to high yield environments
- ✓ Light tawny, **STS and intermediate** for chloride variety with solid standability
- ✓ Good **SDS, frogeye, and PRR tolerance**, and stem canker resistance
- ✓ Widely adapted variety with nice eye appeal all season

YIELD ENVIRONMENT			SOIL TYPE	
HIGHLY PRODUCTIVE	MODERATE	LOW	SANDY	CLAY
●	●	●	●	●

AREA OF ADAPTABILITY

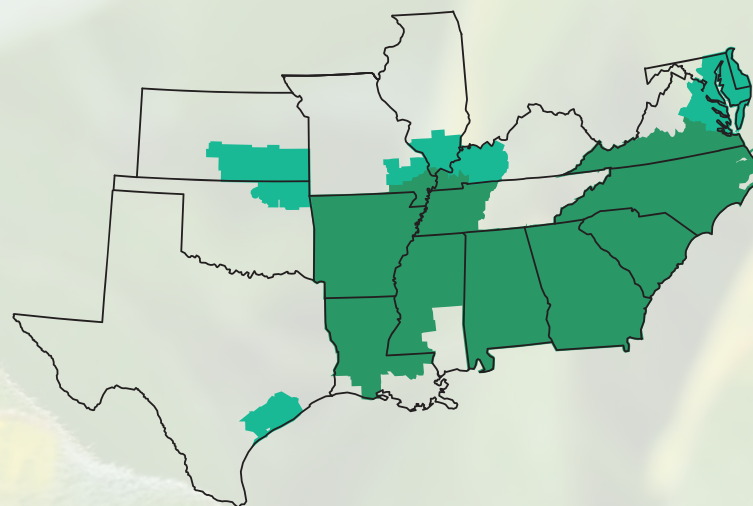


DM48F53

- ✓ **Versatile variety** with excellent yield potential and reliable agronomics
- ✓ **Built for moderate to high** yield environments
- ✓ Medium plant type with **very good standability**
- ✓ **Stem canker resistance**, very good frogeye and SDS score
- ✓ Bush phenotype with **good eye appeal scores**

YIELD ENVIRONMENT			SOIL TYPE	
HIGHLY PRODUCTIVE	MODERATE	LOW	SANDY	CLAY
●	●	●	●	●

AREA OF ADAPTABILITY

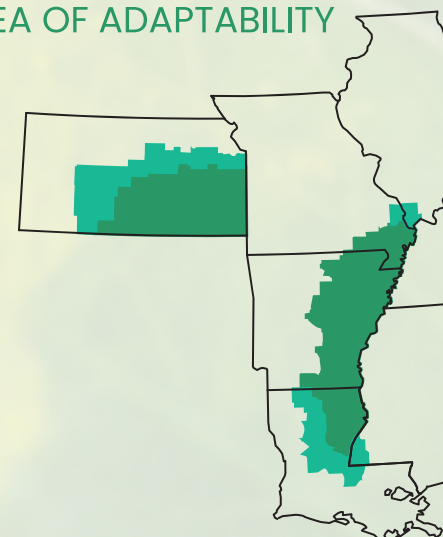


DM49F62S

- ✓ Performs best when planted early in high-yield environments on **loam soils**
- ✓ **Strong competitor** against comparable Xtend® and XtendFlex® checks
- ✓ Medium-tall plant type with **great eye appeal**
- ✓ **Stem canker resistance**
- ✓ **STS and salt index excluder variety**

YIELD ENVIRONMENT			SOIL TYPE	
HIGHLY PRODUCTIVE	MODERATE	LOW	SANDY	CLAY
●	●	●	●	●

AREA OF ADAPTABILITY



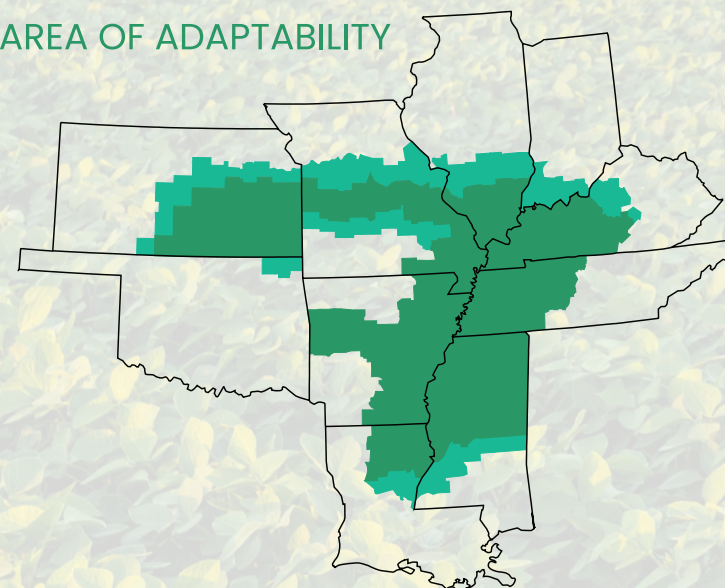


DM46C34S

- ✓ **New conventional** release for 2024!
- ✓ **Strong performance** across Midsouth and Louisiana
- ✓ SCN, SC with **good PRR** field tolerance
- ✓ **STS** Stacked
- ✓ **Medium plant height** with light tawny / tan appearance

YIELD ENVIRONMENT			SOIL TYPE	
HIGHLY PRODUCTIVE	MODERATE	LOW	SANDY	CLAY
●	●	●	●	●

AREA OF ADAPTABILITY





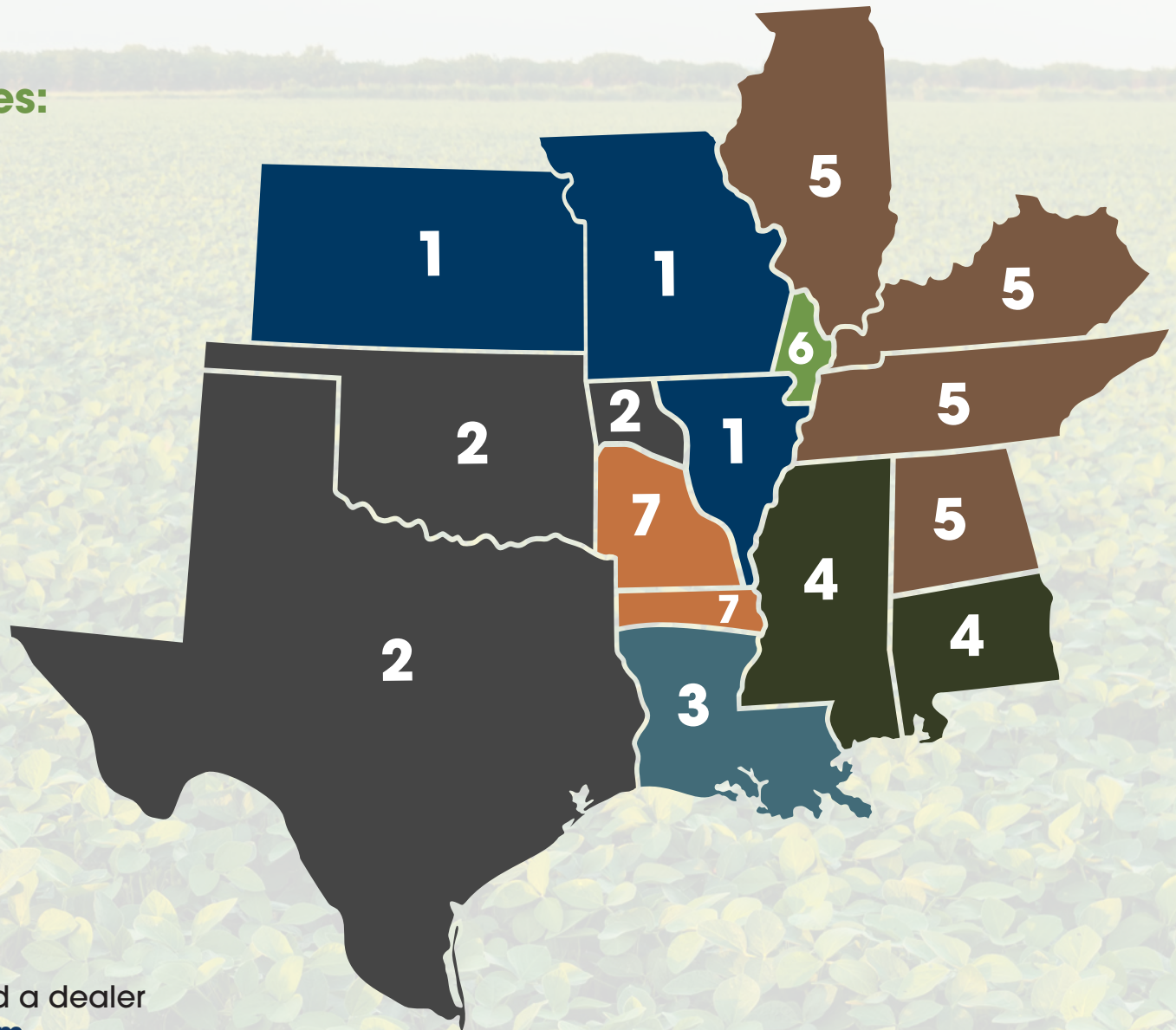
Stratton Seed Company

Sales Representatives:

- 1** **Jason Pieroni**
501-286-2394
- 2** **Keith Hammer**
501-326-3845
- 3** **Richard Ellerbe**
318-669-4316
- 4** **Carwin Harris**
662-820-0227
- 5** **Chris Gordon**
731-514-6999
- 6** **Matt McCrate**
573-225-5013
- 7** **Johnathan Moreland**
870-377-3029

[800] 264-4433

Contact your local rep. or find a dealer
near you at **StrattonSeed.com**



DONMARIO® Soybeans

Varieties with the DuPont™ STS™ soybean technology are tolerant to certain SU (sulfonylurea) herbicides. NOTE: A soybean variety with a herbicide tolerant trait does not confer tolerance to all herbicides. Spraying herbicides not labeled for a specific soybean variety will result in severe plant injury or plant death. Always read and follow herbicide label directions and precautions for use.

The GDM soybean products (including any conventional [non-GMO] soybean products) have been developed by GDM through decades of elite soybean breeding, with the sole intent to create elite soybean germplasm and deliver consistently high-yielding varieties to growers. Bringing about these seed products has taken — and will continue to take — time, effort and investment to GDM and its suppliers. Such products are covered by intellectual property, including trademarks, pending plant variety certificates, confidential information, trade secrets, and pending patents. Grower shall not retain, hold back, clean, condition, sell (except as grain for feed or processing), transfer, or use any unused seed or its progeny (colloquially known as “saved seed”, “brown bag” or “bin run”) during any subsequent planting seasons beyond the planting season in which the applicable unit(s) of seed product(s) was acquired. In addition, research and breeding with the products and its progeny is strictly prohibited.

Growers must sign a GDM® SEEDS USE AGREEMENT for the purchase of any DONMARIO® soybean product. Even if some Products do not contain biotech traits, the GDM® SEEDS USE AGREEMENT protects the intellectual property associated with non-biotech products such as germplasm and other intellectual know-how. Remember that the agreements you need to sign are dependent on what seed you purchased. For more information, visit www.AgCelerate.com or contact your seed dealer.

Performance may vary from location to location and from year to year, as local growing, soil and weather conditions may vary. These are general recommendations based on data taken from company trials and field observations and do not constitute a warranty of fitness or guarantee of performance for a particular use. Growers should evaluate data from multiple locations and years whenever possible.

DONMARIO® is a trademark used by B&B Seeds, LLC under license from GDM Seeds, Inc., 454 E. 300N Rd., Gibson City, IL 60936. Stratton Seed DA Company is a distributor of DONMARIO products for B&B Seeds, LLC. DON MARIO.



XTENDFLEX® & ROUNDUP READY 2 XTEND®

Bayer is a member of Excellence Through Stewardship® (ETS). Bayer products are commercialized in accordance with ETS Product Launch Stewardship Guidance, and in compliance with Bayer's Policy for Commercialization of Biotechnology-Derived Plant Products in Commodity Crops. Commercialized products have been approved for import into key export markets with functioning regulatory systems. Any crop or material produced from this product can only be exported to, or used, processed or sold in countries where all necessary regulatory approvals have been granted. It is a violation of national and international law to move material containing biotech traits across boundaries into nations where import is not permitted. Growers should talk to their grain handler or product purchaser to confirm their buying position for this product. Excellence Through Stewardship® is a registered trademark of Excellence Through Stewardship.

ALWAYS READ AND FOLLOW PESTICIDE LABEL DIRECTIONS. It is a violation of federal and state law to use any pesticide product other than in accordance with its labeling. NOT ALL formulations of dicamba or glyphosate are approved for in-crop use with Roundup Ready 2 Xtend® soybeans. NOT ALL formulations of dicamba, glyphosate or glufosinate are approved for in-crop use with products with XtendFlex® Technology. ONLY USE FORMULATIONS THAT ARE SPECIFICALLY LABELED FOR SUCH USES AND APPROVED FOR SUCH USE IN THE STATE OF APPLICATION. Contact the U.S. EPA and your state pesticide regulatory agency with any questions about the approval status of dicamba herbicide products for in-crop use with Roundup Ready 2 Xtend® soybeans or products with XtendFlex® Technology.

Roundup Ready 2 Xtend® soybeans contain genes that confer tolerance to glyphosate and dicamba. Products with XtendFlex® Technology contains genes that confer tolerance to glyphosate, glufosinate and dicamba. Glyphosate will kill crops that are not tolerant to glyphosate. Dicamba will kill crops that are not tolerant to dicamba. Glufosinate will kill crops that are not tolerant to glufosinate. Contact your seed brand dealer or refer to the Bayer Technology Use Guide for recommended weed control programs.

Roundup Ready 2 Xtend®, Roundup Ready 2 Yield® and XtendFlex® are registered trademarks of Bayer Group. LibertyLink® and the Water Droplet Design® is a trademark of BASF Corporation.

No dicamba may be used in-crop with seed with Roundup Ready® Xtend Technology, unless and until approved or specifically permitted, and no dicamba formulations are currently registered for such use in the 2025 season. Please follow <https://www.roundupreadyxtend.com/pages/xtendimax-updates.aspx> for status updates.



ENLIST E3® SOYBEANS & POWERCORE® ENLIST® CORN

Seeds containing the PowerCore® Enlist®, PowerCore® Enlist® Refuge Advanced®, Enlist® Corn - REFUGE and Enlist E3® traits are protected under one or more U.S. patents which can be found at www.traitstewardship.com. The purchase of this traited seed includes a limited license to produce a single crop in the United States. The use of seed from such a crop and/or the progeny thereof for propagation or seed multiplication or for production or development of a hybrid or different variety of seed is strictly prohibited. You acknowledge and agree to be bound by the terms and conditions of the following documents in effect at the time of planting of this seed: (i) the Corteva Agriscience Technology Use Agreement and (ii) the Product Use Guides for all technologies in this seed, including the Herbicide Resistance Management (HRM), and Use requirements.

To plant PowerCore Enlist, PowerCore Enlist Refuge Advanced, Enlist Corn - REFUGE and Enlist E3 seed, you must have a limited license from Corteva Agriscience (or other appropriate affiliates). In consideration of the foregoing, Corteva Agriscience grants to the Grower a limited license to use its technology to produce only a single commercial crop in the United States under the terms and conditions set forth in the Technology Use Agreement in effect at the time of planting of this seed.

Enlist E3® soybean seeds containing the Enlist® trait can only be used to plant a single commercial crop. It is unlawful to save and replant Enlist E3 soybeans. Additional information and limitations on the use of these products are provided in the Corteva Agriscience Technology Use Agreement and Enlist® Soybean Product Use Guide. U.S. patents for Corteva Agriscience technologies can be found at www.corteva.us/Resources/trait-stewardship.html.

IRM - Properly managing trait technology is key to preserving it as a long term crop protection tool. Growers who fail to comply with IRM requirements risk losing access to this product. To help preserve the effectiveness of B.t. corn technologies, growers planting B.t. corn technologies are required to follow an IRM Plan. Consult the Corn Product Use Guide for appropriate refuge configuration options. Before opening a bag of seed, be sure to read, understand and accept the stewardship requirements, including applicable refuge requirements for insect resistance management, for the biotechnology traits expressed in the seed as set forth in the Technology Use Agreement and Product Use Guide. By opening and using a bag of seed, you are reaffirming your obligation to comply with the most recent stewardship requirements. For complete details on IRM requirements for hybrids with Bt technology, including refuge examples and important information on the use of insecticides on refuge and Bt corn acres, please consult appropriate Product Use Guide. Go to www.corteva.us/Resources/trait-stewardship.html to download the latest Corteva Agriscience Corn Product Use Guide.

Corteva Agriscience is a member of Excellence Through Stewardship® (ETS). Corteva Agriscience products are commercialized in accordance with ETS Product Launch Stewardship Guidance and in compliance with the Corteva Agriscience policies regarding stewardship of those products. In line with these guidelines, our product launch process for responsible launches of new products includes a longstanding process to evaluate export market information, value chain consultations, and regulatory functionality. Growers and end-users must take all steps within their control to follow appropriate stewardship requirements and confirm their buyer's acceptance of the grain or other material being purchased. For more detailed information on the status of a trait or stack, please visit www.biotradestatus.com. Excellence Through Stewardship® is a registered trademark of Global Stewardship Group.

Following burndown, Enlist Duo® and Enlist One® herbicides with Colex-D® technology are the only herbicides containing 2,4-D that are authorized for preemergence and postemergence use with Enlist® crops. Consult Enlist® herbicide labels for weed species controlled. Enlist Duo and Enlist One herbicides are not registered for use or sale in all states and counties; are not registered in AK, CA, CT, HI, ID, MA, ME, MT, NH, NV, OR, RI, UT, VT, WA and WY; and have additional subcounty restrictions in AL, GA, TN and TX, while existing county restrictions still remain in FL. All users must check "Bulletins Live! Two" no earlier than six months before using Enlist One or Enlist Duo. To obtain "Bulletins," consult epa.gov/espp/, call 1-844-447-3813, or email ESPP@epa.gov. You must use the "Bulletin" valid for the month and state and county in which Enlist One or Enlist Duo are being applied. Contact your state pesticide regulatory agency if you have questions about the registration status of Enlist® herbicides in your area. ALWAYS READ AND FOLLOW PESTICIDE LABEL DIRECTIONS. IT IS A VIOLATION OF FEDERAL AND STATE LAW TO USE ANY PESTICIDE PRODUCT OTHER THAN IN ACCORDANCE WITH ITS LABELING. ONLY USE FORMULATIONS THAT ARE SPECIFICALLY LABELED FOR SUCH USE IN THE STATE OF APPLICATION. USE OF PESTICIDE PRODUCTS, INCLUDING, WITHOUT LIMITATION, 2,4-D-CONTAINING PRODUCTS NOT AUTHORIZED FOR USE WITH ENLIST CORN AND SOYBEANS, MAY RESULT IN OFF-TARGET DAMAGE TO SENSITIVE CROPS/ AREAS AND/OR SUSCEPTIBLE PLANTS, IN ADDITION TO CIVIL AND/OR CRIMINAL PENALTIES. Additional product-specific stewardship requirements for Enlist crops, including the Enlist Product Use Guide, can be found at www.traitstewardship.com.

POWERCORE® multi-event technology developed by Corteva Agriscience LLC and Monsanto. LibertyLink® and the Water Droplet Design are registered trademarks of BASF. PowerCore® and Roundup Ready® are registered trademarks of Bayer Group. Always follow IRM, grain marketing and all other stewardship practices and pesticide label directions. B.t. products may not yet be registered in all states. Check with your seed representative for the registration status in your state. The transgenic soybean event in Enlist E3® soybeans is jointly developed and owned by Corteva Agriscience and M.S. Technologies, L.L.C.™ ® Trademarks of Corteva Agriscience and its affiliated companies.



STS®

This variety contains a trait providing enhanced tolerance to labeled specific sulfonylurea soybean herbicides. The STS® gene will not safeguard this variety against other herbicide chemistries which are labeled to be used only over-the-top of crops that have a different and specified herbicide resistant gene. Always read and follow herbicide directions prior to use. Not all herbicides are registered for sale or use in all states or counties in the United States or all provinces in Canada. Contact your local regulatory agency to determine if a product is registered for sale or use in your area. Always read and follow label directions. ACCIDENTAL APPLICATION OF INCOMPATIBLE HERBICIDES TO THIS VARIETY COULD RESULT IN TOTAL CROP LOSS. YOU MUST SIGN A TECHNOLOGY USE AGREEMENT AND READ THE PRODUCT USE GUIDE PRIOR TO PLANTING. The purchase of these seeds includes a limited license to produce a single soybean crop in the United States (or other applicable country). The use of seed from such a crop or the progeny thereof for propagation or seed multiplication or for production or development of a hybrid or different variety of seed is strictly prohibited. Resale or transfer of the seed is strictly prohibited.

STS®
herbicide tolerant trait



Stratton Seed Company

1530 Hwy 79 South | Stuttgart, AR 72160



www.StrattonSeed.com